

Kol. Opis

1 MAGNA1 32-100 F



Paznja! Slika proizvoda se može razlikovati od stvarnog proizvoda

Proizvodni broj: [99221237](#)

The new MAGNA1 is the simple option for a job well done. It is the perfect choice when replacing older circulators and due to its compliance with the EuP 2015 regulations, substantial savings on electricity is a reality. The ideal choice for basic performance needs in applications where basic system control and monitoring is desired.

- Monitoring via the fault relay, ensuring peace of mind
- Digital start/stop input available for remote pump control
- Continuous operation and reduced downtime with the wireless twin pump function (available on twin-head pumps)
- High energy efficiency resulting in substantial savings on electricity
- Easy setup and operation via the simple user interface
- No maintenance due to the canned-rotor type design.

MAGNA1 is the simple and efficient choice for most applications including

- Heating
 - Main pump
 - Mixing loops
 - Heating surfaces
- Cooling
 - Air conditioning surfaces
 - Ground source heat pump systems
 - Smaller chiller applications

Te nost:

Dizana te nost: voda
Raspon temperature te nosti: 263 .. 383 K
Selected liquid temperature: 333 K
Gustina: 983.2 kg/m³

Tehni ki:

TF klasa: 110
Saglasnosti na natpisnoj plo ici: CE,VDE,EAC,CN ROHS,WEEE

Materijali:

Ku ište pumpe: Liveno gvož e
EN-GJL-200
ASTM A48-200B
Rotor: PES 30%GF

Ugradnja:

Opseg temperature okruženja: 273 .. 313 K
Maksimalni radni pritisak: 1000 kPa
Standardna priрубnica: DIN
Spajanje pumpe: DN 32
Nazivni pritisak: PN6/10
Dužina ugra ivanja: 220 mm

Kol. Opis

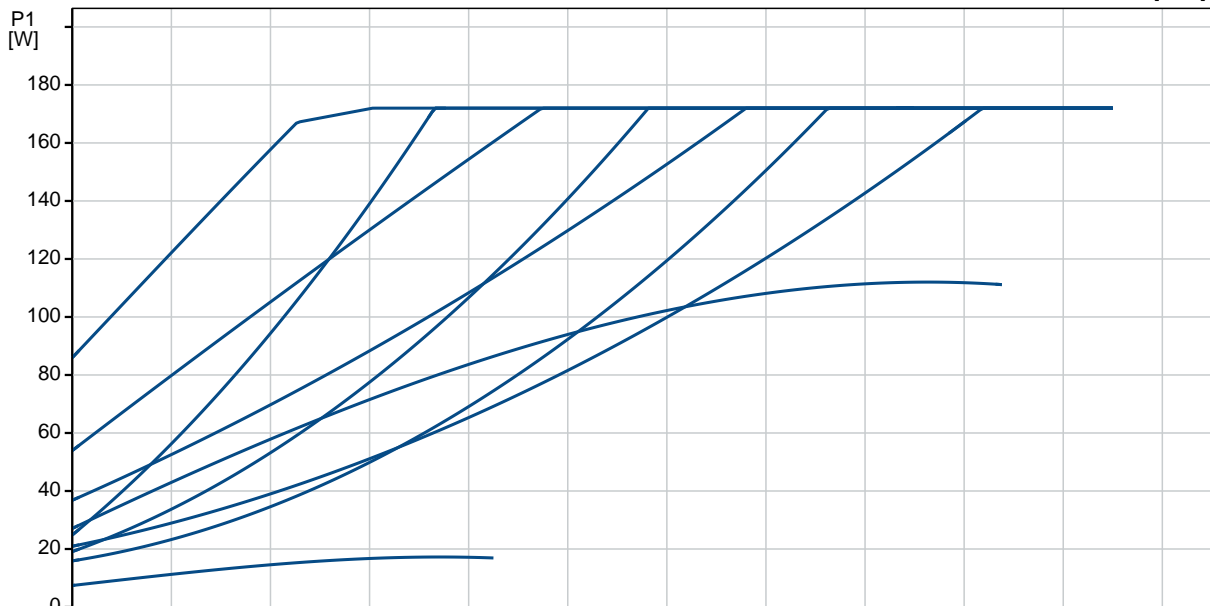
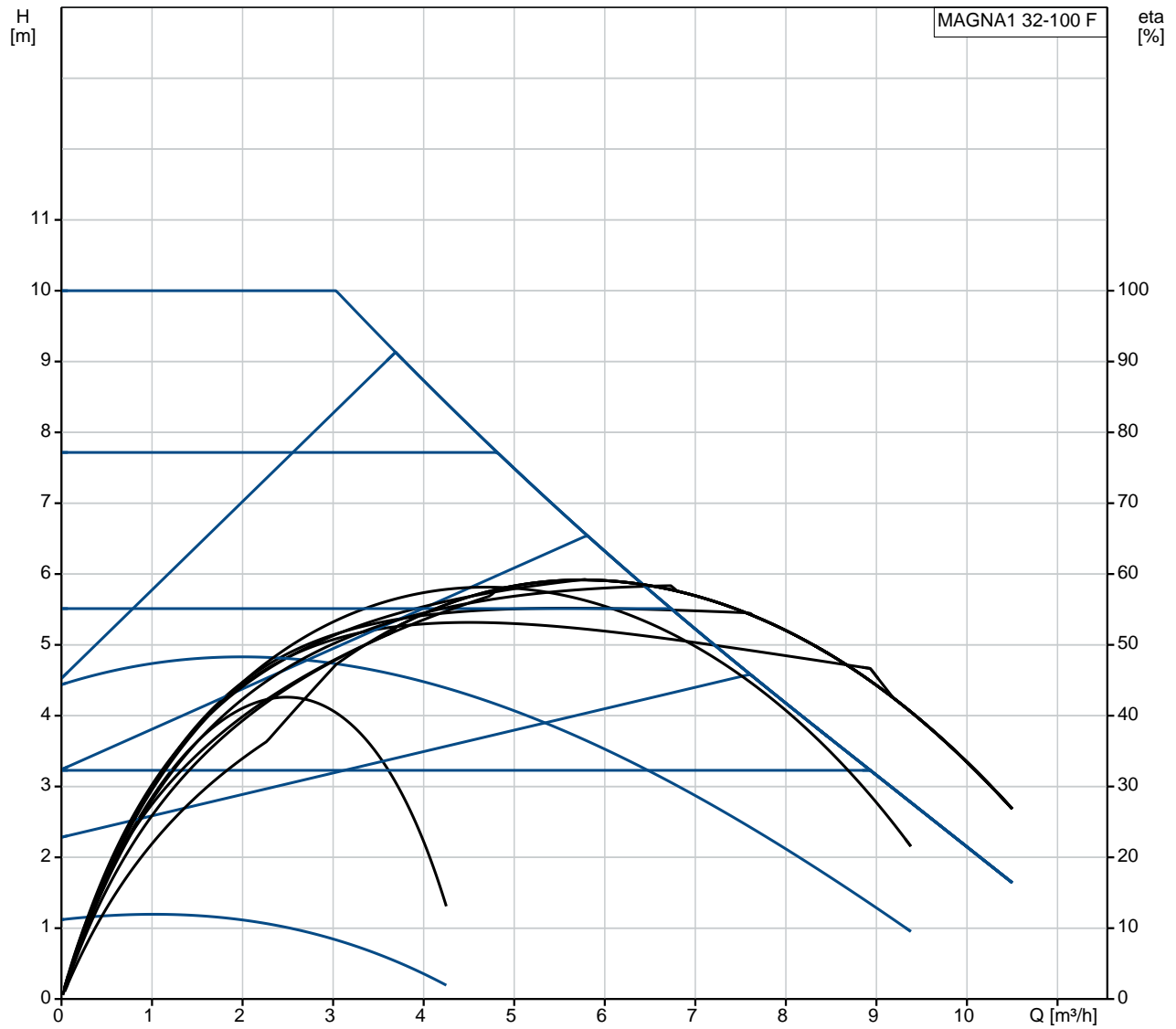
Elektri ni podaci:

Potrebna snaga - P1: 8 .. 175 W
Frekvencija struje: 50 / 60 Hz
Potrebni napon: 1 x 230 V
Maksimalna strujna potrošnja: 0.08 .. 1.41 A
Klasa zaštite (IEC 34-5): X4D
Klasa izolacije (IEC 85): F

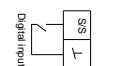
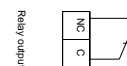
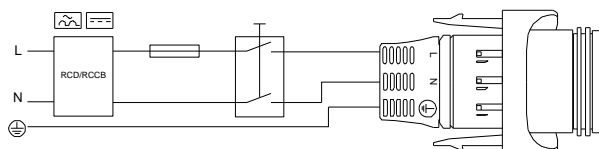
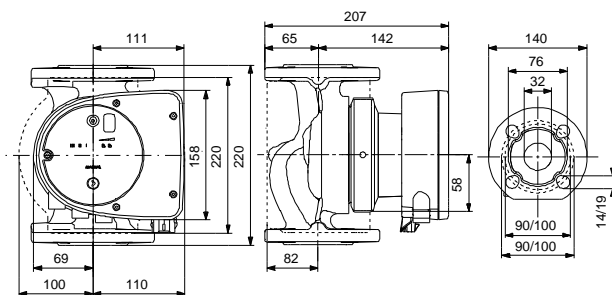
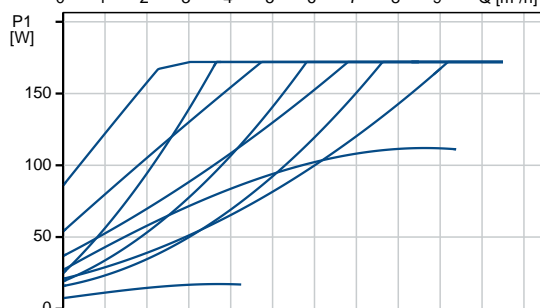
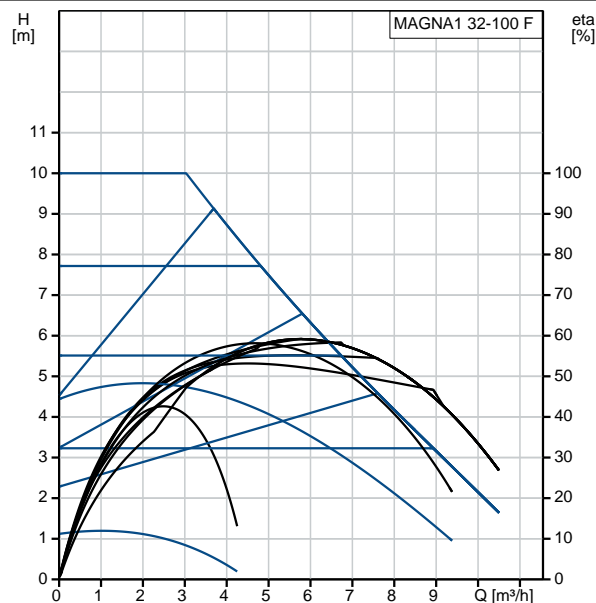
Ostali:

Energy (EEI): 0.20
Neto masa: 7.5 kg
Bruto masa: 8.5 kg
Shipping volume: 0.016 m³
Finnish LVI No.: 4615308
Country of origin: DE
Custom tariff no.: 84137030

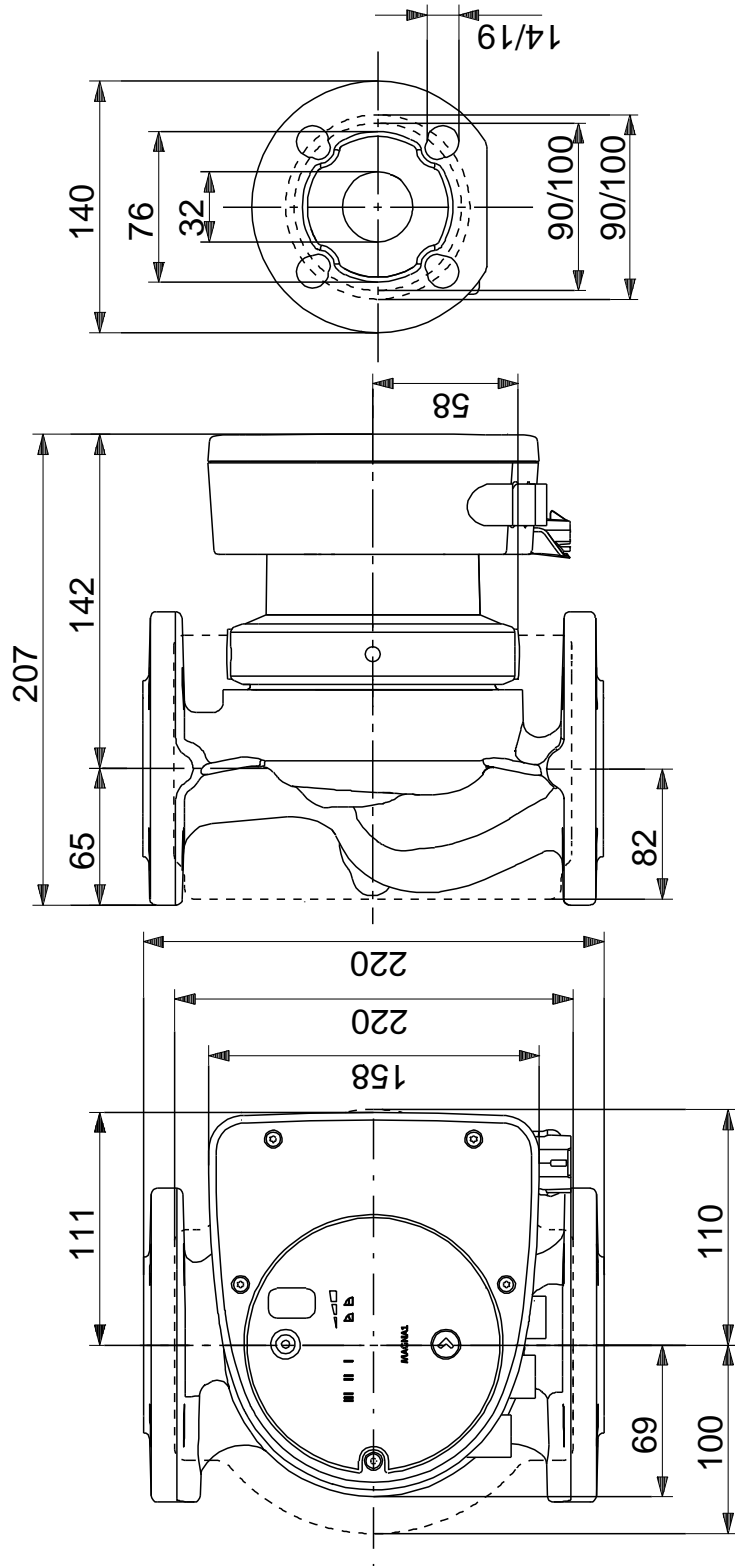
99221237 MAGNA1 32-100 F



| Opis | Vrednost |
|---------------------------------|--|
| Opšte informacije: | |
| Ime proizvoda:: | MAGNA1 32-100 F |
| Šifra proizvoda: | 99221237 |
| EAN broj:: | 5712608942105 |
| | 5712608942105 |
| Cena: | 800,82 € |
| Tehni ki: | |
| Visina max.: | 10 m |
| TF klasa: | 110 |
| Saglasnosti na natpisnoj plo i: | CE, VDE, EAC, CN ROHS, WEEE |
| Model: | C |
| Materijali: | |
| Ku ište pumpe: | Liveño gvoŹ e EN-GJL-200 ASTM A48-200B |
| Rotor: | PES 30%GF |
| Ugradnja: | |
| Opseg temperature okruŹenja: | 273 .. 313 K |
| Maksimalni radni pritisak: | 1000 kPa |
| Standardna priрубnica: | DIN |
| Spajanje pumpe: | DN 32 |
| Nazivni pritisak: | PN6/10 |
| DuŹina ugra ivanja: | 220 mm |
| Te nost: | |
| Dizana te nost: | voda |
| Raspon temperature te nosti: | 263 .. 383 K |
| Selected liquid temperature: | 333 K |
| Gustina: | 983.2 kg/m ³ |
| Elektri ni podaci: | |
| Potrebna snaga - P1: | 8 .. 175 W |
| Frekvencija struje: | 50 / 60 Hz |
| Potrebni napon: | 1 x 230 V |
| Maksimalna strujna potrošnja: | 0.08 .. 1.41 A |
| Klasa zašтите (IEC 34-5): | X4D |
| Klasa izolacije (IEC 85): | F |
| Ostali: | |
| Energy (EEI): | 0.20 |
| Neto masa: | 7.5 kg |
| Bruto masa: | 8.5 kg |
| Shipping volume: | 0.016 m ³ |
| Finnish LVI No.: | 4615308 |
| Country of origin: | DE |
| Custom tariff no.: | 84137030 |

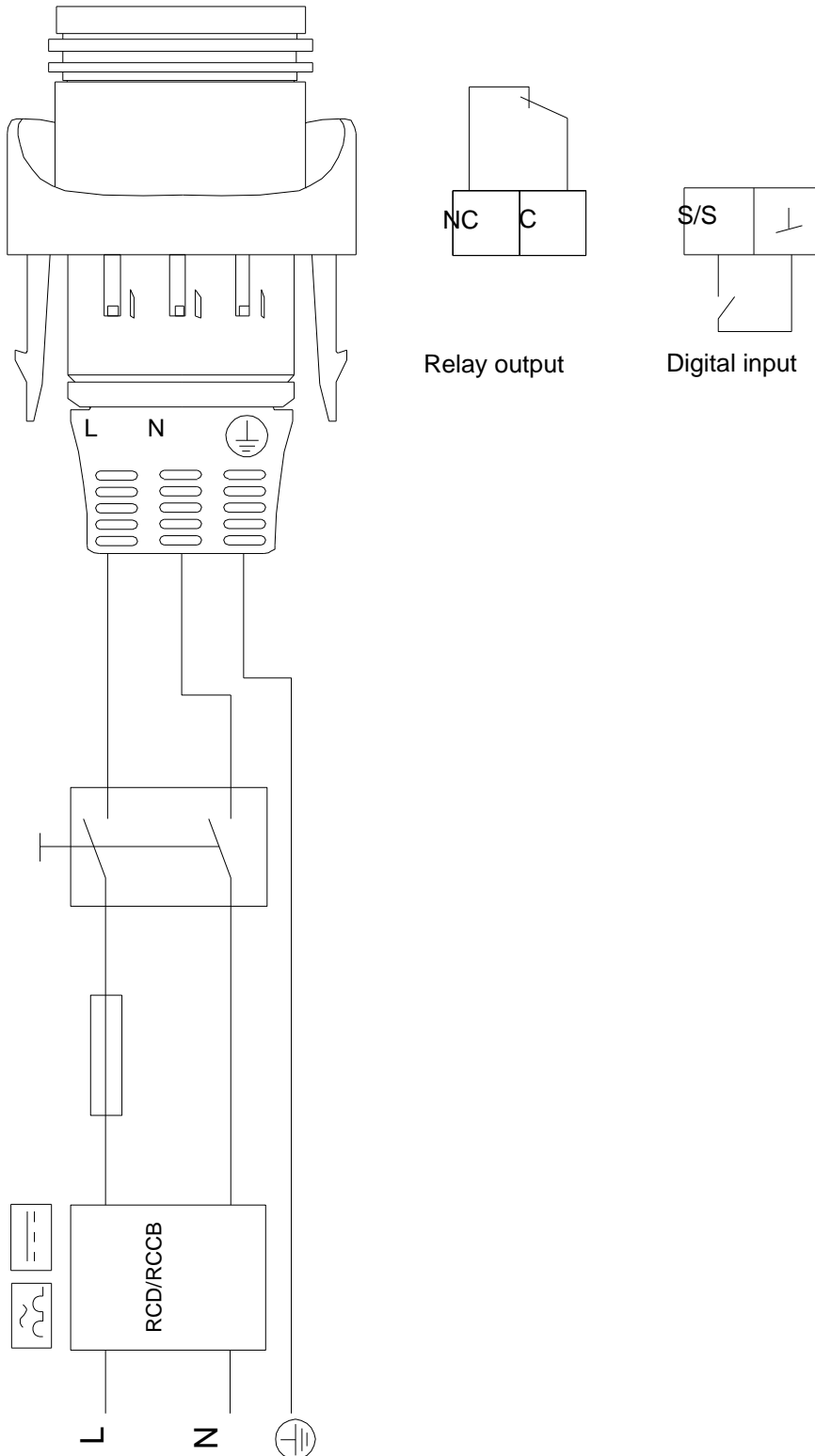


99221237 MAGNA1 32-100 F



Napomena! Sve jedinice su u [mm]ukoliko druga nije navedeno.
Upozorenje: Ovaj pojednostavljeni dimenzioni crtež ne pokazuje sve detalje.

99221237 MAGNA1 32-100 F



Pažnja! Sve jedinice su u [mm] ukoliko nije re eno druga ije.